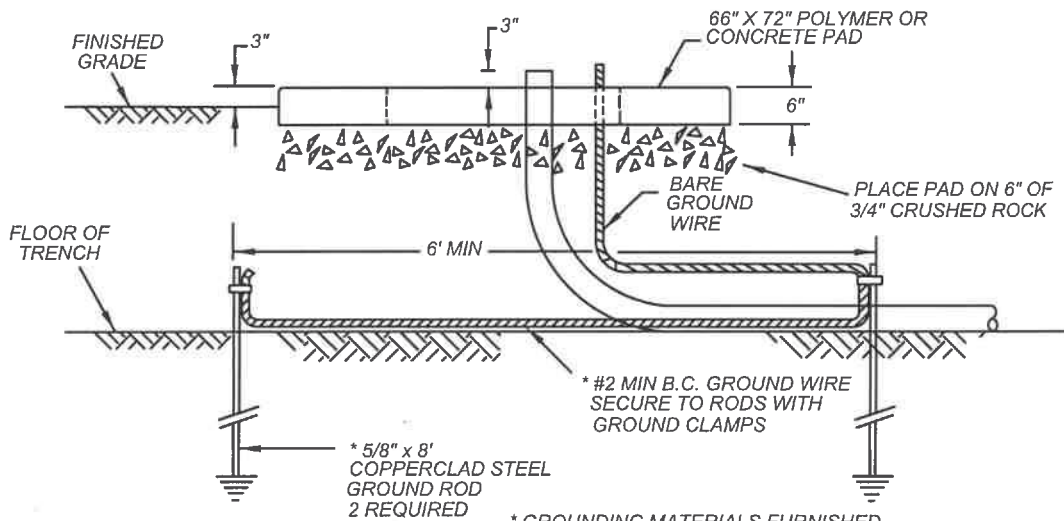
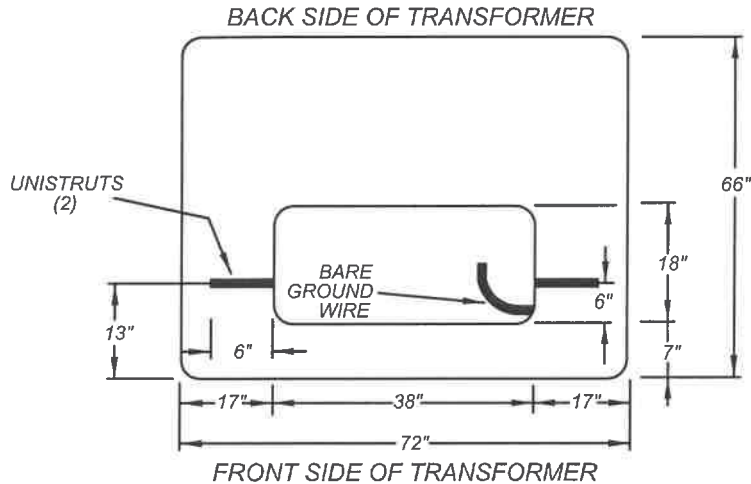




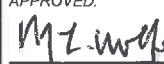
MORENO VALLEY STANDARD No MVEU-712-1
66" x 72" PAD FOR 75kVA-300kVA
PAD MOUNTED TRANSFORMERS



NOTES:

1. 8' UNOBSTRUCTED FLAT WORKING CLEARANCE IS REQUIRED AT FRONT OF PAD. (MEASURED FROM EDGE OF PAD)
2. 3' UNOBSTRUCTED CLEARANCE IS REQUIRED AT BACK OF PAD. (MEASURED FORM EDGE OF PAD)
3. 3' CLEARANCE IS REQUIRED ON BOTH SIDES OF PAD. (MEASURED FROM EDGE OF PAD)
4. MASTIC SEALANT REQUIRED AT JOINTS AND GAPS AROUND TRANSFORMER ENCLOSURE.
5. REFER TO STDS MVEU-722-0 & MVEU-723-0 FOR ADDITIONAL DETAILS.
6. THE THREE-PHASE TRANSFORMER SHOULD ONLY BE USED ON A PAD WHEN FOUR OR FEWER SERVICES ARE TO BE INSTALLED. A SLAB BOX SHOULD BE USED WHEN MORE THAN FOUR SERVICES WILL BE INSTALLED.

NOT TO SCALE

	RECOMMENDED:  DIVISION MANAGER	8-1-19 DATE	<h2 style="margin: 0;">CITY OF MORENO VALLEY</h2> FINANCIAL & MANAGEMENT SERVICES DEPARTMENT - ELECTRIC UTILITY DIVISION
	APPROVED:  PUBLIC WORKS DIRECTOR / CITY ENGINEER	8/1/19 DATE	<h3 style="margin: 0;">66" x 72" PAD</h3> <h3 style="margin: 0;">FOR 75kVA - 300kVA</h3> <h3 style="margin: 0;">PAD MOUNTED TRANSFORMERS</h3>